

Booth Specifications and Exhibition Fee

A Type Booth

Booth specifications

1 booth (width 2.97m × depth 2.97m • center to center)
rear and side walls only (except for corner booth)
*Decorations, Name Box, Carpeting, etc. are not included.

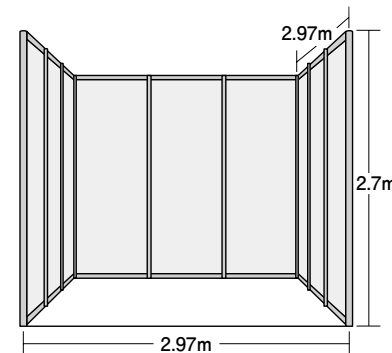
Exhibition fee

One booth **451,000 yen** (*including tax)

Layout of booths

You can select any floor pattern from those below according to the number of modular panels you wish to use.

Number of booths	Booth Types and Decoration Height Limitations	Booth Arrangement
1-3 booth(s):	Row type only (height: up to 2.7m *up to 4m when set back 1m)	
4-5 booths	Choice of row type or block type (height: up to 4m) *An Island booth is surrounded by aisles on all sides. For a Row Type, please contact the show office.	
6 or more booths	Island booth only (height: up to 5m) *Four sides are opened. If you wish to have the row type, please contact the management office. *An Island booth is surrounded by aisles on all sides. For a Row Type, please contact the show office.	



Display Package*

Proposed Ready-to-move-in Display Package

▶One booth Type (3x3m) **Exhibition Fee + 143,000 yen** (*including tax)

System Wall Panel (Octanorm system) / Company name / Carpet

Option Items : Reception Counter (W900 × D450 × H800) ×1

Electricity : LED Fluorescent 20W × 1 / LED Spotlights 15W × 2 / Electrical outlet × 2 (100V with ground) / Wiring cost and Electric rates × 1kW

Rental Furniture : Folding Chair×1 / Name Box × 1

Details and application procedures will be provided in the Exhibitor Manual scheduled for release in July 2026.



B Type Booth

Up to 2 booths per company

Booth specifications

1 booth (width 1.98m × depth 1.98m • center to center)
*Decorations and furniture included

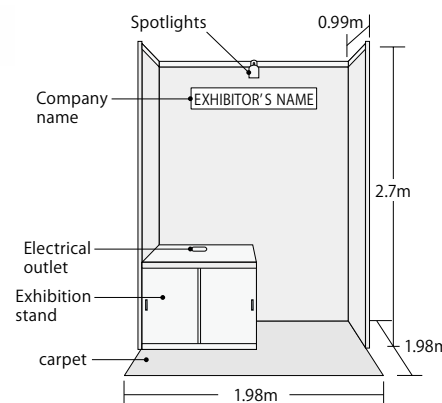
Exhibition fee

One unique booth **264,000 yen** (*including tax)

Included in the exhibition fee : Exhibition space / Rear and 1m side walls / Company nameplate / Carpet / Exhibition stand (W990 × D990 × H1020) / Slide door unit (without key) / LED spotlight 15W × 1 / Electrical outlet × 2 (100V with ground) / Wiring cost and Electric rates × 500W

※ Additional equipment is submitted to additional charges. Details of available equipment will be sent in August (planned) (Exhibitor Manual).

* No deductions can be made even when the basic display mentioned above is not used.



Booth layout and height limit

Exhibitors can decorate the booths to a height of 2.7m.

Web Banner

Highlight your presence beforehand with a Link Banner on Sensor Expo Japan Official Website

Period of availability: From August 6 to September 12, 2026

Banner size: W200px × H40px GIF format (can be animated)

Publication Fee: **55,000 yen** (*including tax)

Material due date: July 23, 2026 ※ for final version data at the above size

The exhibition covering all fields
of new sensing technologies

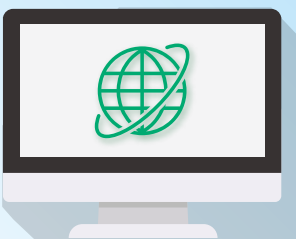
SENSOR EXPO JAPAN 2026

Exhibition Guideline

2026.9.16^W ▶ 18^F 10:00 - 17:00
Tokyo Big Sight, East Hall

For application, please visit the application form on the official website.

www.sensorexpojapan.com



産経新聞社

SANKEI SHIMBUN CO., LTD.

“SENSOR EXPO JAPAN” Show Office

1-7-2 Otemachi, Chiyoda-ku, Tokyo 100-8079, Japan

TEL: +81-3-3273-6161 FAX: +81-3-3241-4999 E-mail: sensor@sankei.co.jp

www.sensorexpojapan.com

Exhibition Outline

Exhibition Name: SENSOR EXPO JAPAN 2026

Dates: September 16 (Wed) - 18 (Fri), 2026

Venue: Tokyo Big Sight (Tokyo, Japan), East Hall

Organizer: SANKEI SHIMBUN CO., LTD.

Special Partner: Japan Society of Next Generation Sensor Technology

Supporting and cooperate organizations will be listed on our website once determined.

Exhibition Subjects

SENSOR EXPO JAPAN 2026

The exhibition covers all fields of fundamental and advanced sensing technologies, paving the way for the DX Society. This show features essential technologies, products, and applications for AI/IoT, including Sensors, Fundamental Components, Fusion Systems, and Digital Solutions.

Regrouping

■ Light & Electromagnetic Wave Sensing ■ Mechanical & Physical Quantity Sensing ■ Temperature, Humidity & Fluid Sensing ■ Magnetic & Current Sensing ■ Chemical, Environmental & Bio-Sensing ■ Imaging & Remote Sensing ■ Sound & Ultrasound Sensors ■ Touch, RFID & Identification Technologies ■ Sensor Core Technologies & Components (MEMS/NEMS, Actuators, Materials) ■ Measurement, Control & Evaluation Systems ■ AI, Software & Data Solutions (incl. Digital Twin) ■ Communication Devices & Network (IoT/5G/LPWA) ■ Power Supply, Energy Harvesting & Noise Suppression

Visitors Categories

- **R&D and Technology Development Professionals:** Developers, engineers, and researchers focusing on core technology development (e.g., MEMS, AI), system integration, and data analytics.
- **Industrial DX & Production Site Specialists:** Professionals involved in Manufacturing DX and Smart Factory initiatives, production engineering, quality control, maintenance, and procurement/materials.
- **IoT/Social Infrastructure Application Users:** Actors from all sectors—including Smart Cities, Mobility (V2X), Healthcare, Retail, and Social Infrastructure (e.g., transport, energy)—exploring or implementing innovative sensor solutions.
- **Management, Strategy & Future Leaders:** DX Promotion Officers (CDO/CIOs), corporate planning, consultants, start-ups, academic/research organizations, and students seeking strategic information.

Concurrent Exhibitions

■ JIMA 2026	Organizer : General Incorporated Association Japan Inspection Instruments Manufacturers' Association
■ INTERMEASURE 2026	Organizer : Japan Measuring Instruments Federation (JMIF)
■ Geotechnical Forum 2026	Organizer : GEPC / SANKEI SHIMBUN CO., LTD.
■ FORESTRISE 2026	Organizer : SANKEI SHIMBUN CO., LTD.
■ 2026 PATENT INFORMATION FAIR & CONFERENCE	Organizer : Japan Institute for Promoting Invention and Innovation, Japan Patent Information Organization, SANKEI SHIMBUN CO., LTD.

Schedule

Schedule until the exhibition (2026)

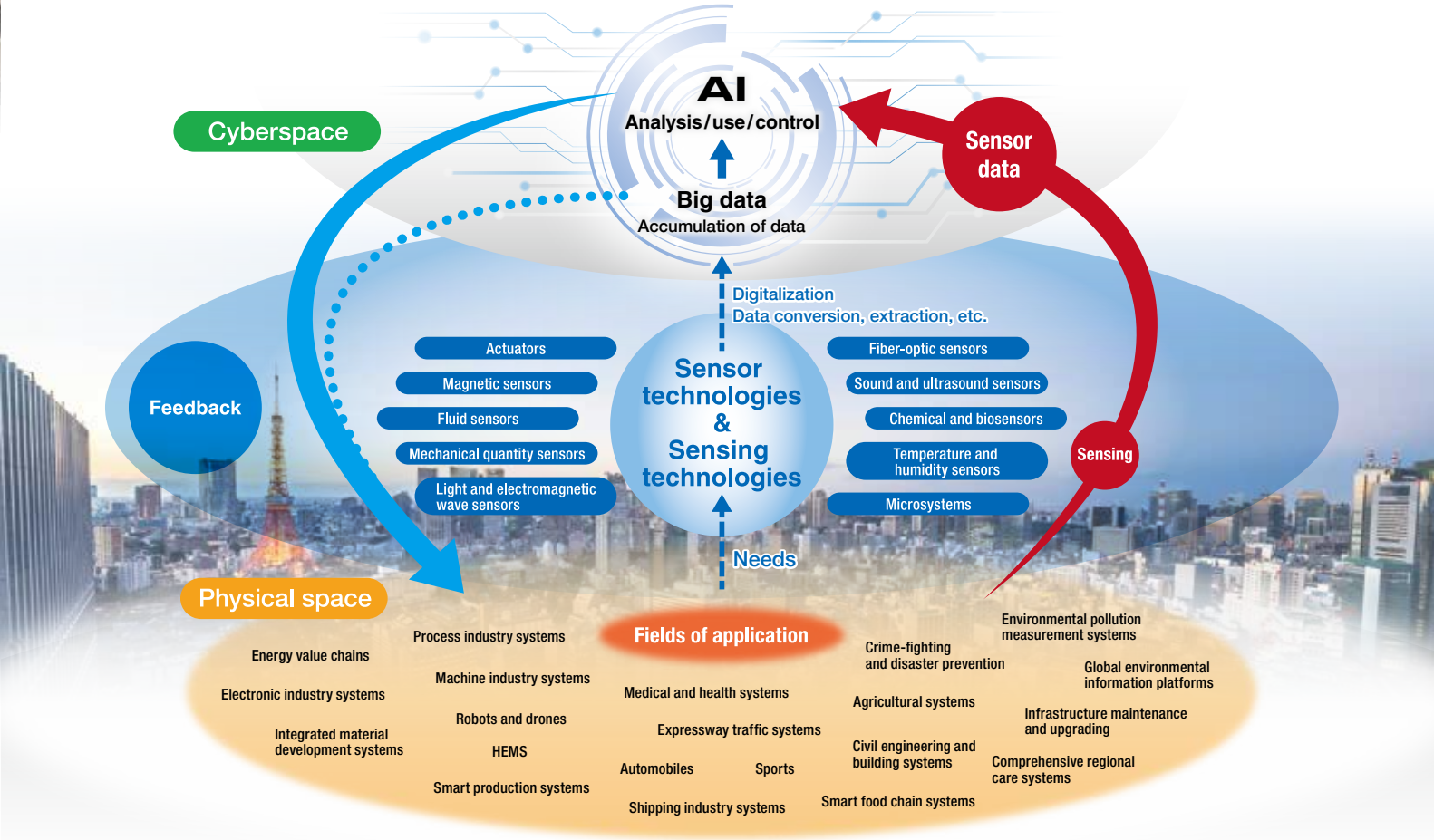
April 28 (Tue)	July	September 14 (Mon)	September	End of December
Deadline for Application (sending invoice after receiving the Application Form)	① Sending Exhibitor Manual, Floorplan and other exhibiting material ② Promotional Activities (web banner, exhibitors' details)	9:00 - 18:00 Booth construction, Exhibitors Move-in	15 (Tue) 9:00 - 18:00 Exhibitors Move-in 16 (Wed) 10:00 - 17:00 Exhibition Period 17 (Thu) 10:00 - 17:00 Exhibition Period 18 (Fri) 10:00 - 17:00 Exhibition Period, Moving-out from 17:00	Exhibition Report

Sensor Expo Japan 2026 Exhibition & Forum

Overall Structure

◆ Exhibition

Exhibits will be provided by leading companies and organizations involved in the entire chain of fundamental sensing technologies and innovative digital solutions. Exhibitors will promote products, services, and technologies—from core components to systems—that actively contribute to the realization of the DX, AI, and IoT Society.



Sensors and Technologies

This zone will feature technologies and products—including Sensors, Electronic Components, and Devices—that form the foundation for DX Society, as well as integrated technologies such as AI and Digital Solutions.

We welcome exhibits of the following types:

- ① Existing and cutting-edge Devices and Modules proposed by application fields such as DX and Social Issue Resolution.
- ② Exhibits focusing on next-generation supporting technologies, from Elemental Technologies (e.g., Pressure, Photoelectric) to Core Technologies (e.g., MEMS, AI Fusion).
- ③ Innovative technologies with undetermined target applications that seek new collaborations and applications, looking ahead to future market trends.

Target exhibitors

- All companies and organizations capable of exhibiting products and technologies in the exhibition categories.

Exhibition categories

Sensors

- **Light & Electromagnetic Wave Sensing** Photosensors, infrared sensors, radiation sensors, ultraviolet sensors, laser sensors, photoelectric sensors, fiber-optic sensors, CMOS/CCD Image Sensors, LiDAR.
- **Mechanical & Physical Quantity Sensing** Pressure sensors, accelerometers, angular rate sensors, rotation sensors, displacement sensors, impact sensors, strain sensors, motion sensors, Torque sensors, Force sensors, Inertial sensors, Sound and Ultrasound sensors.
- **Temperature, Humidity & Fluid Sensing** Temperature sensors, humidity sensors, heat flux sensors, flow sensors, level sensors, density sensors, Energy Harvesting (Environmentally Powered) sensors.
- **Magnetic & Current Sensing** Magnetic sensors, current sensors, MR/GMR sensors, Electromagnetic Noise Measurement.
- **Chemical, Environmental & Bio-Sensing** Gas sensors, ion sensors, odor sensors, taste sensors, Biomolecular sensors, Particle/Pollen sensors, Non-contact Biosensors (e.g., Brain/Pulse wave).
- **Imaging & Remote Sensing** Image sensing technologies, Smart Vision, AI-enabled sensors, Remote Sensing technologies.
- **Touch, RFID & Identification Tech.** Touch sensors, RFID sensors, Bar code readers / OCR, NFC.
- **Sensor Core Technologies & Components** Sensor Fusion, Micromachine, MEMS, NEMS, Actuators, Sensor network systems and technologies, Sensor components, parts, and materials.
- **Measurement, Control & Evaluation Systems** Measurement, control, testing, and inspection devices, equipment, and systems, High-Precision Inspection, Predictive Maintenance Systems.
- **AI, Software & Data Solutions** AI, data analysis, data processing algorithm development, control, Image Processing, Digital Twin Technologies.
- **Communication Devices & Networks** Communication devices and networks (IoT/IIoT Platforms), 5G/Local 5G, LPWA, Wi-Fi, V2X Communication.
- **Power Supply & Noise Suppression** Battery and Power supply, Electromagnetic, EMC, noise suppression, Energy Harvesting.
- **Electronic Equipment & Others** Electronic equipment, Other engineered products and information.

Visitors profile

- **R&D and Technology Development Professionals:** Developers, engineers, and researchers focusing on core technology development (e.g., MEMS, AI), system integration, and data analytics, and marketing personnel.
- **Industrial DX & Production Site Specialists:** Professionals involved in Manufacturing DX and Smart Factory initiatives, production engineering, quality control/inspection, maintenance, and procurement/materials.
- **IoT/Social Infrastructure Application Users:** Actors from all sectors—including Smart Cities, Mobility (V2X), Healthcare, Retail, and Social Infrastructure (e.g., transport, energy)—exploring or implementing innovative sensor solutions, and government personnel.
- **Management, Strategy & Future Leaders:** DX Promotion Officers (CDO/CIOs), corporate planning, consultants, start-ups, academic/research organizations, industry organizations, trading companies, and students seeking strategic information.