

Booth Specifications and Exhibition Fee

A Type Booth

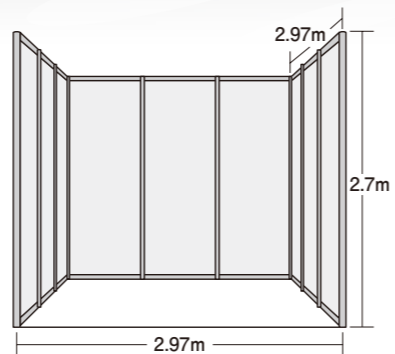
Booth specifications

1 booth (width 2.97m × depth 2.97m • center to center)
rear and side walls only (except for corner booth)

*Decorations, Name Box, Carpeting, etc. are not included.

Exhibition fee

One booth **429,000 yen** (*including tax)



Layout of booths

You can select any floor pattern from those below according to the number of modular panels you wish to use.

Number of booths	Height restrictions for decorations	Booth Arrangement
1-3 booth unit(s)	Row Type only (Height: until 4m, except within a 1m border near the aisles)	
Over 4 booth units	Block Type 4 booths or Island booth from 6 booths (Height: until 5m) *An Island booth is surrounded by aisles on all sides. For a Row Type, please contact the show office.	

Display Package*

Proposed Ready-to-move-in Display Package

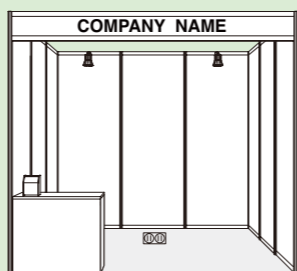
▶ One booth Type (3x3m) **Exhibition Fee + 121,000 yen** (including tax)

System Wall Panel (Octanorm system), Company name, Carpet

Option Items : Reception Counter (W900 × D450 × H800)×1

Electricity : Fluorescent 40W ×1, Arm-spotlights 100W ×2, Wiring cost ×1kW, Electric rates ×1kW

Rental Furniture : Folding Chair ×1, Name Box ×1



B Type Booth Up to 2 booth per company

Booth specifications

1 booth (width 1.98m × depth 1.98m • center to center)

*Decorations and furniture included

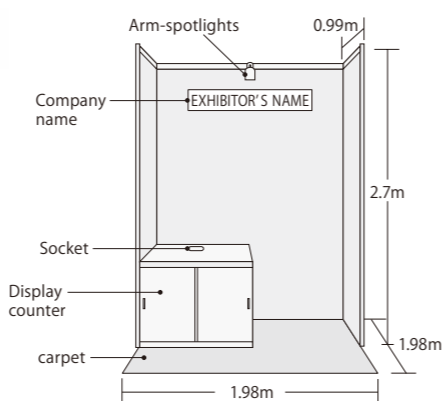
Exhibition fee

One unique booth **253,000 yen** (including tax)

Included in the exhibition fee: exhibition space, rear and 1m side walls, company nameplate, carpet, exhibition stand (W1.0m × D1.0m × H0.8m), slide door unit (without key), spotlight (22W) × 1, electrical outlet × 2 (100V with ground), electricity and installation costs up to 1500W

※ Additional equipment is submitted to additional charges. Details of available equipment will be sent in August (planned) (Exhibitor Manual).

* No deductions can be made even when the basic display mentioned above is not used.



Booth layout and height limit

Exhibitors can decorate the booths to a height of 2.7m.

The exhibition covering all fields of new sensing technologies

SENSOR EXPO JAPAN 2023

Exhibition Guideline

9.13^WED ▶ 15^FR 10:00 - 17:00
Tokyo Big Sight, East Hall

Web Banner

Highlight your presence beforehand with a Link Banner on Sensor Expo Japan Official Website

Period of availability: From August 9 to September 15, 2023

Banner size: W200px × H40px GIF format (can be animated)

Publication Fee: **55,000 yen** (including tax)

Material due date: July 26, 2023 ※ for final version data at the above size

産経新聞社

SANKEI SHIMBUN CO., LTD.
“SENSOR EXPO JAPAN” Show Office

1-7-2 Otemachi, Chiyoda-ku, Tokyo 100-8079, Japan
TEL: +81-3-3273-6180 FAX: +81-3-3241-4999 E-mail: sensor@sankei.co.jp

www.sensorexpojapan.com

Exhibition Outline

Exhibition Name:	SENSOR EXPO JAPAN 2023
Dates:	September 13 (Wed) - 15 (Fri), 2023
Venue:	Tokyo Big Sight (Tokyo, Japan), East Hall
Organizer:	SANKEI SHIMBUN CO., LTD.
Special Partner:	Japan Society of Next Generation Sensor Technology
Supporting and cooperate organizations will be listed on our website once determined.	

Exhibition Subjects

SENSOR EXPO JAPAN 2023

The exhibition covering all fields of new sensing technologies. This show regroups products and applications for sensors, controls, systems, devices, technologies and information.

Regrouping

- Sensors ■ Micromachines ■ Actuators ■ Control, measurement, test, inspection field-related machines, devices and systems
- Components, materials ■ Electric power, energy ■ Biotechnology ■ Nanotechnology ■ Robots ■ Imaging devices, Cameras ■ Software
- Other engineered products and information ■ IoT, MEMS·NEMS

Visitors Categories

- Developers and engineers looking for advanced sensing technologies
- Specialists involved in design, manufacture, quality control and inspection, procurement
- Actors from various industries - retail, trade, service, fisheries, forest and agriculture, public infrastructure (transport, communication, energy, etc.) - medical institutions or governmental agencies considering the use of innovative sensors.

Concurrent Exhibitions

MEASURING TECHNOLOGY EXPO 2023	Organizer : Japan Optical Measuring Instruments Manufacturers' Association Japan Precision Measuring Instruments Manufacturers' Association Special Sponsor : SANKEI SHIMBUN CO.,LTD.
AUTO-ID & COMMUNICATION EXPO	Organizer : Japan Automatic Identification Systems Association
TEST2023 JAPAN TESTING TECHNOLOGY SHOW 2023	Organizer : Japan Testing Machine Association

Schedule

Schedule until the exhibition (2023)

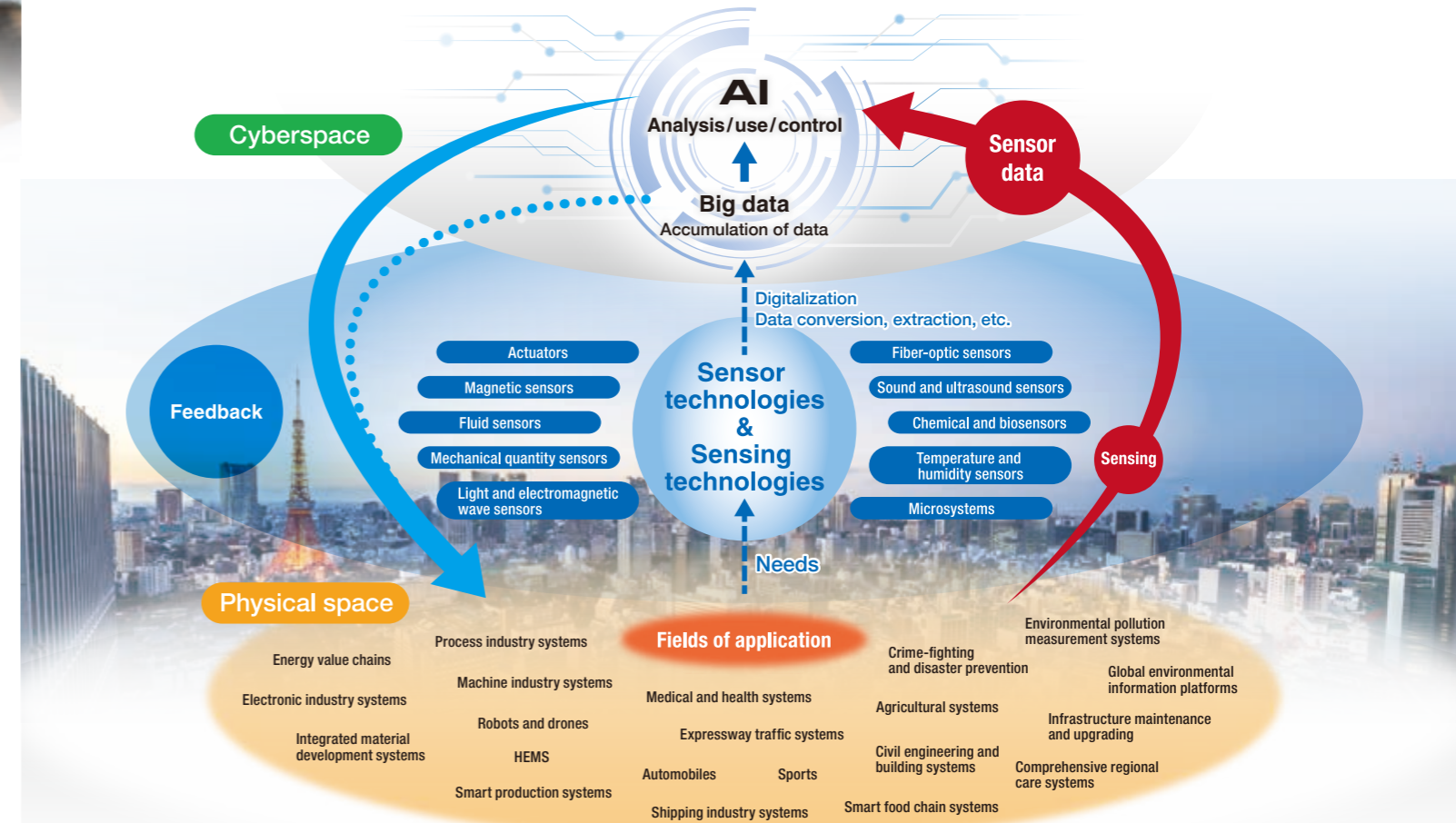
May 19 (Fri)	July	September 11 (Mon)	September	End of December
Deadline for Application (sending invoice after receiving the Application Form)	① Sending Exhibitor Manual, Floorplan and other exhibiting material ② Promotional Activities (web banner, exhibitors' details)	9:00 - 18:00 Booth construction, Exhibitors Move-in	12 (Tue) 9:00 - 18:00 Exhibitors Move-in 13 (Wed) 10:00 - 17:00 Exhibition Period 14 (Thu) 10:00 - 17:00 Exhibition Period 15 (Fri) 10:00 - 17:00 Exhibition Period, Moving-out from 17:00	Exhibition Report

Sensor Expo Japan 2023 Exhibition & Forum

Overall Structure

◆ Exhibition

Booth exhibits will be provided by leading companies and organizations involved in sensing and elemental technologies. Exhibitors will promote the latest products, technologies, services, peripherals, and other information that contributes to the AI and IoT society.



Sensors and Technologies

This zone will exhibit technologies and products including sensors and electronic components and devices, as well as technologies such as AI and software.

We welcome exhibits of the following types:

- ① Electronic components, devices, modules, etc. exhibited by application.
- ② Exhibits focusing on specific elemental technologies.
- ③ Devices and technologies for which target applications have not yet been identified.

Target exhibitors

- All companies and organizations capable of exhibiting products and technologies in the exhibition categories.

Exhibition categories

Sensors

- Light and electromagnetic wave (Photosensors, infrared sensors, radiation sensors, ultraviolet sensors, laser sensors, photoelectric sensors, fiber-optic sensors, illuminance sensors, photodiodes, etc.)
- Mechanical and physical quantity (Pressure sensors, accelerometers, angular rate sensors, rotation sensors, displacement sensors, impact sensors, strain sensors, motion sensors, torque sensors, etc.)
- Temperature, humidity, and fluid (Temperature sensors, humidity sensors, heat flux sensors, flow sensors, level sensors, density sensors, etc.)
- Magnetic and current (Magnetic sensors, current sensors, etc.)
- Chemistry and biotechnology (Gas sensors, ion sensors, odor sensors, taste sensors, etc.)
- Biometric (Brain wave sensors, pulse wave sensors, etc.)
- Image (Image sensing technologies, smart sensors, remote sensing technologies, etc.)
- Environmental (Particle sensors, pollen sensors, etc.)
- Sound and ultrasound ● Touch ● RFID ● Bar code readers / OCR

● Sensor fusion ● Micromachine, MEMS, NEMS ● Actuators ● Sensor network systems and technologies

● Sensor components, parts, and materials ● Measurement, control, testing, and inspection devices, equipment, and systems

● Electronic equipment

● Communication devices and networks (RFID, NFC, Bluetooth Beacon, Zigbee, Wi-SUN, LPWA, Wi-Fi, 5G, LTE, etc.)

● Software (AI, data analysis, data processing algorithm development, control, image processing, etc.)

● Electromagnetic, EMC, noise suppression ● Battery and power supply ● Other

Visitors profile

- R&D staff, engineers, and marketing personnel from a wide range of industries requiring sensors and sensing technologies
- Specialists and staff in fields including design, manufacturing, production, quality control and testing, procurement and materials, etc.
- All those seeking to investigate or gather information on the use of new sensors, including healthcare and government personnel and social infrastructure providers in fields such as distribution, service industries, retail, agriculture, forestry, fisheries, transportation, communications, and energy
- Persons responsible for promoting IoT introduction in a wide range of industries
- Trading companies ● Industry organizations ● Academic, research, and development organizations ● Government agencies ● Consultants ● Students